



International Counselor Cadre Box

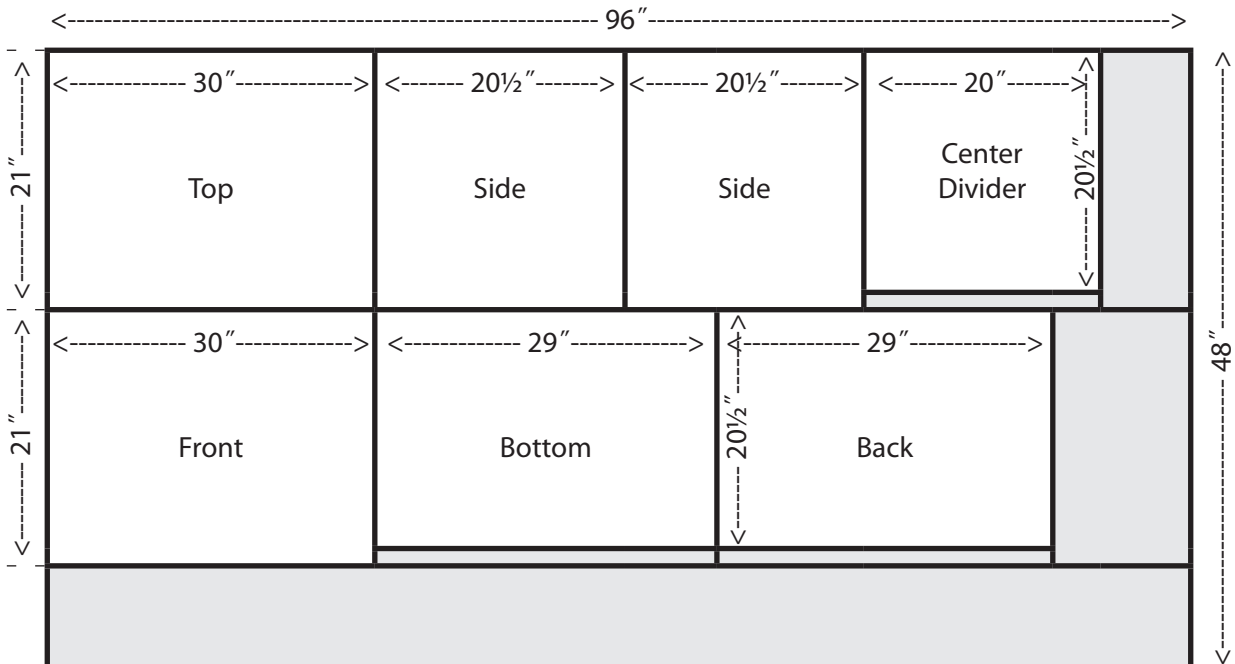
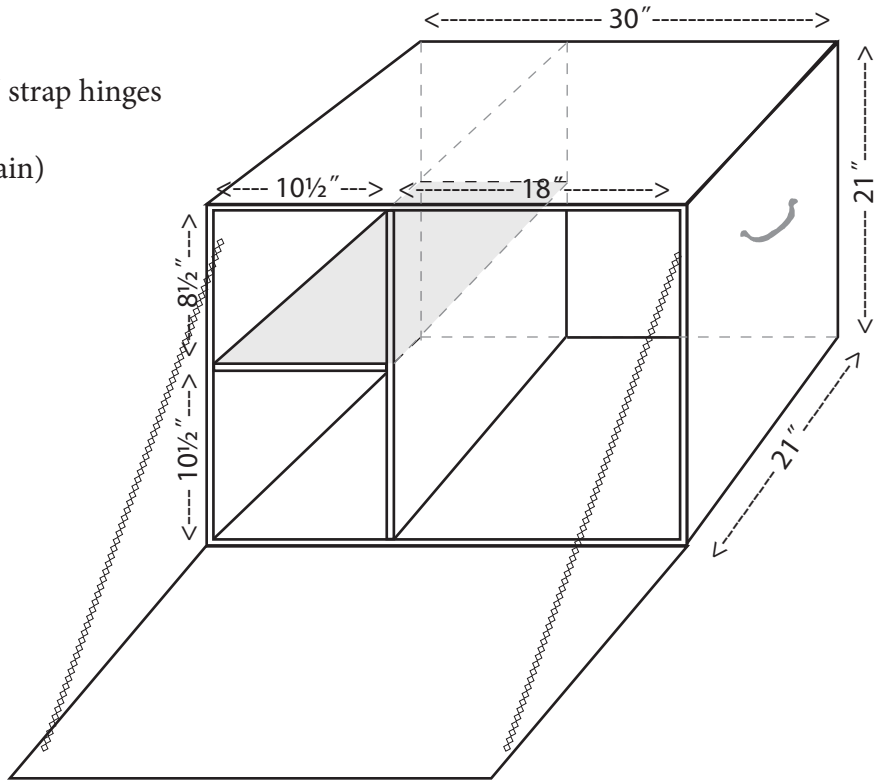
1. Traditional 2
2. Hinged Table/Box 3
3. Camporee Equipment List 4

Boxes must weigh less than 150 pounds, loaded.

Traditional Cadre Box

Materials List & Plans

- (1) $\frac{1}{2}$ " \times 4' \times 8' fir plywood
- (1) $\frac{1}{2}$ " \times 10 $\frac{1}{2}$ " \times 20 $\frac{1}{2}$ "
- (1) 30" piano hinge or (3) 3" strap hinges
- (2) 24" chain
- (4) eye-hooks (used with chain)



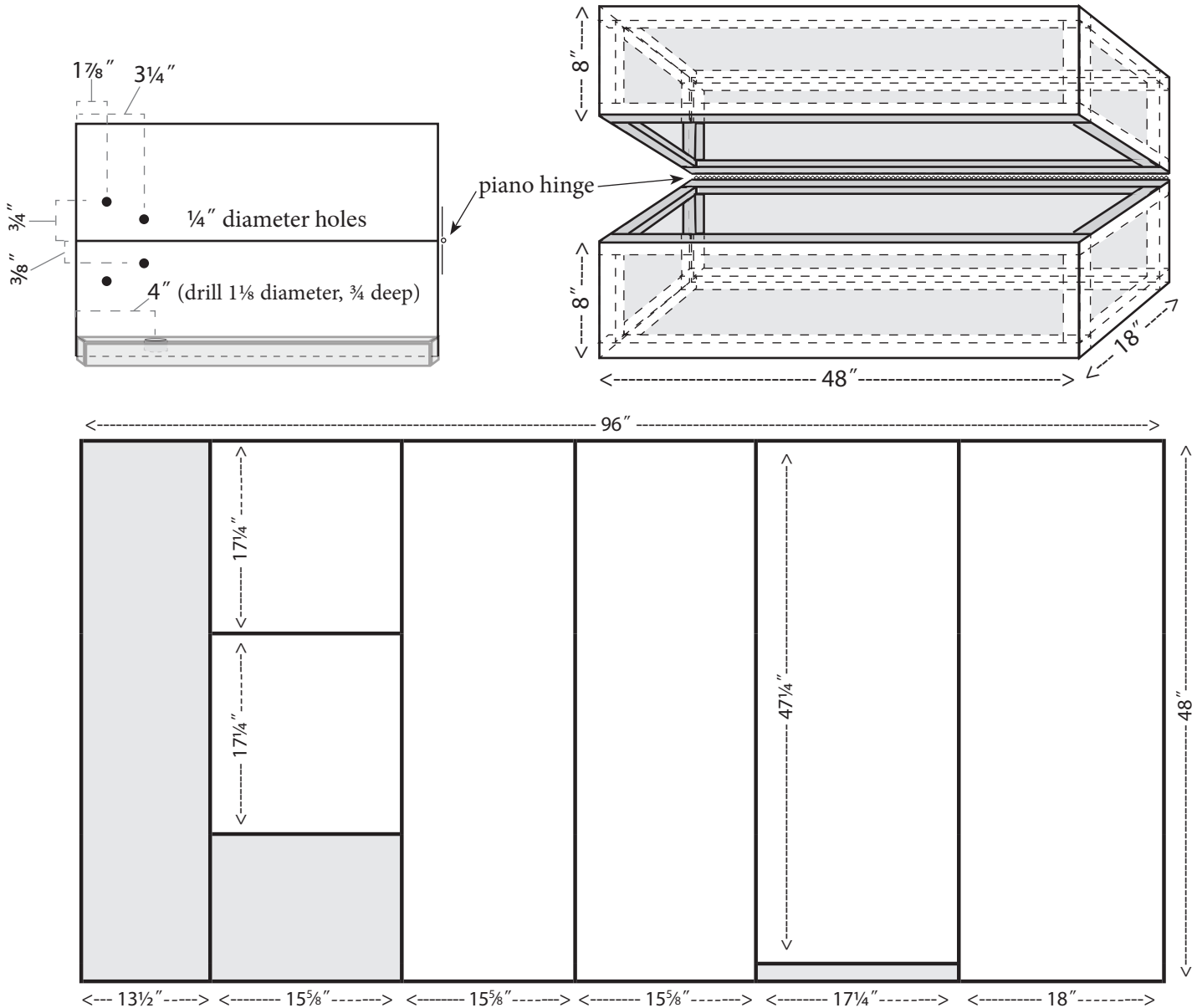
Hinged Table/Cadre Box

Materials List

(cost about \$100 in 2010)

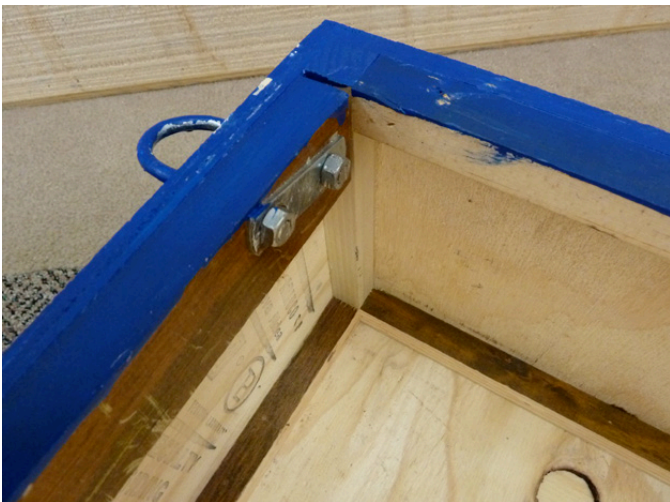
- (1) $\frac{3}{8}$ " \times 4' \times 8' fir plywood (rough sawn)
- (1) 1" \times 8" \times 7' pine ($\frac{3}{4}$ " \times $\frac{3}{4}$ " frame on all edges)
- (1) 1 $\frac{1}{2}$ " \times 48" piano hinge
- (2) catch locks
- (4) u-bolts 2 $\frac{1}{2}$ " long (for 1" rod) *cut screw part off after installation*
- (4) 1" \times 36" Black pipe
- (2) 2" \times 4" \times 18" *rip in half to 1 $\frac{1}{2}$ " \times 1 $\frac{1}{2}$ " for handles*

Put sides, top, bottom, front, and back all together, then rip in half (all 4 sides) on a table saw.



Hinged Table/Cadre Box

Photos



International Camporee Equipment List

SAMPLE

MANDATORY

- 5-gallon water container
- Small timber saw with extra blades
- Hatchet with sheath
- Shovel
- Rake
- Pots and pans (for 12 people)
- Potato peeler (2)
- Meat Knife
- Paring Knife
- Can opener (cover removing type)
- Bottle opener/Juice can punch
- Wire whip (for mixing)
- Spatula, long-handled spoons, long-handled fork, and slotted spoons
- Butter container
- Tongs or pliers
- Cutting board (12 x 14)
- Covered food containers for storage
- Box of large sealable baggies for food storage
- Gloves for hot dishes
- Soap pads (2 boxes)
- Dish washing soap detergent (large bottle)
- Dish pans
- Waterproof table cloth
- Waterproof matches
- Toilet tissue
- First aid kit
- Propane stove (don't bring fuel, it will be provided)
- Duct tape
- Rope

OPTIONAL

- color markers for tents
- Colander
- Potato masher
- Large mixing bowls
- Napkins
- Paper towels
- Cadre box (max size is 30"x 48" x 24", max weight is 150 pounds [76cm x 122cm x 61cm and 68 kilograms])
- Insect screen (for ventilation)
- File or whetstone
- Extra plastic (for a canopy or enlarging your tent)
- Tarp for shade (max size 10' x 12', one per cadre)
- Cots
- Flashlight batteries
- Propane lantern
- Coffee (none is provided at camp)
- Cooking spray
- Camp chair
- Tea pot

NOT ALLOWED

Structures (tents, camopies, aluminum poles) other than those provided at the camporee